

BACKGROUND OF HEALTH SERVICES ON MORNINGTON ISLAND

In 2004 Mornington Island Aboriginal Corporation for Health was formed by working through local Aboriginal community member representatives of the local tribes in the Wellesley Island including Yangool, Kaidilt, and traditional owners of Mornington Island, the Lardil people. The aim was to provide advocacy and would lead efforts to continuously improve and customise local services to secure better health outcomes.

Over the last 10 years there has been a progressive movement to greater levels of Aboriginal community participation in the planning, development and management of primary health and community care on Mornington Island including movement to the Aboriginal community-controlled service model.

In 2016, Gidgee Healing, a regional Aboriginal community-controlled health service, based in Mt Isa, established local and outreach primary health services on Mornington Island. Gidgee Healing managed its primary health services on a regional basis in consultation with the Mornington Island community but based on the relative priorities, needs and funding across all the communities in its commissioned region.

More recently, the aspiration and capability to locally manage the planning, development and delivery of primary health and family services on Mornington Island has grown. Community and organisational development have expanded as the Health Council transformed its corporate governance and organisational capabilities in the practical form of Ngarnal Aboriginal Community Controlled Health Service Limited (NACCHS). Queensland Health (Making Tracks) has supported NACCHS to realise these aspirations in a manner consistent with the need to ensure a functioning health system.

In July 2026, Gidgee Healing will withdraw and NACCHS will transition to local community control through assuming responsibility for the planning, development and management of primary health and community care on Mornington Island.

NACCHS recognises the management of primary care clinical services is a function that requires specialised skills and knowledge and as such its organisational arrangements should reflect a specific competence and experience to ensure consistency and continuity of primary care service capacity and quality and coverage of primary care services.

In February 2026, NACCHS confirmed a shared commitment with RFDS Queensland to develop and deliver sustainable, viable, effective and efficient primary health care services on Mornington Island.

The first priority of the partnership between NACCHS and RFDS Queensland will be the supply of key visiting primary care clinical staff and the delivery of an extended general practice service on Mornington Island.



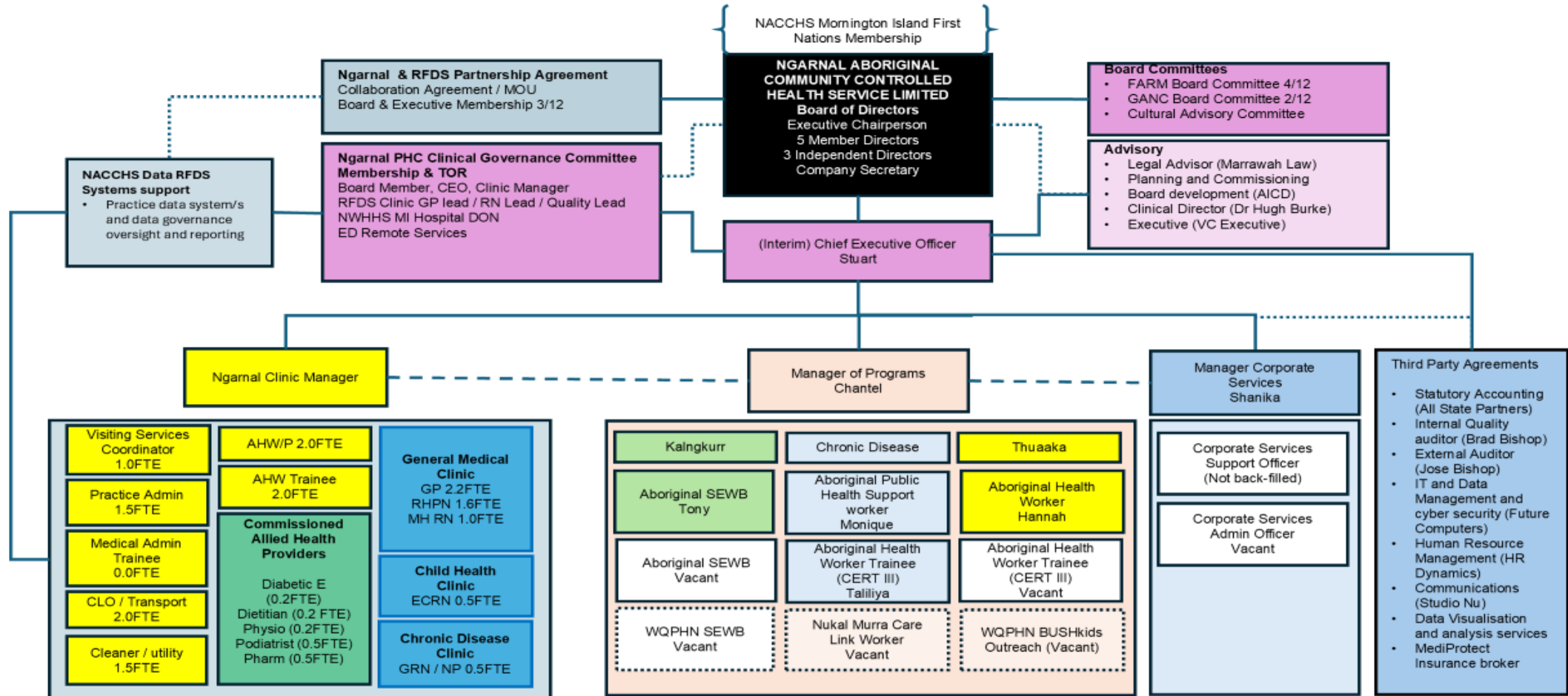
Ngarnal Aboriginal Community Controlled Health Service (NACCHS)

NACCHS is the locally based Aboriginal Community Controlled Health Organisation on Mornington Island. NACCHS exists to advance the health, wellbeing and self-determination of the Mornington Island community through the delivery of high-quality, culturally safe, comprehensive primary health care that is responsive to local needs, culture and aspirations.

As part of its transition to full community control of primary health care services on Mornington Island, NACCHS is establishing the Ngarnal Primary Health Care Clinic (Ngarnal PHC Clinic) and through its Models of Care aims to deliver holistic care through integrated primary care services supporting urgent and unplanned care, proactive, routine and preventative health care. Underpinning this is an emphasis on strong community engagement focused on early intervention, continuity of care and improved population health outcomes.

NACCHS will manage the clinic operations and non-clinical workforce and will commission specialist clinical services and systems support from trusted partners with proven capability in remote and very remote settings.

NACCHS Organisation Chart 2026-27



NGARNAL CLINIC

Better coordination with community and visiting services

Service commencing 1 July 2026

OPENING HOURS

Through our partnership, Doctors and Nurses will be provided by the RFDS

Cultural safety embedded in everything we do

MON	Clinic Opens 8.30am Telehealth consultations in clinic until 1pm 1.00pm-5.00pm	Telehealth in the morning Clinical team flies into MI Doctors, Nurses and local Aboriginal Health Workers in clinic
TUES	Clinic Opens - 8.30am-5.00pm	Doctors, Nurses and local Aboriginal Health Workers in clinic
WED	Clinic Opens - 8.30am-5.00pm	Doctors, Nurses and local Aboriginal Health Workers in clinic
THURS	Clinic Opens - 8.30am-5.00pm	Doctors, Nurses and local Aboriginal Health Workers in clinic
FRI	Clinic Opens- 8.30am-12.30pm Clinic closed Friday afternoons	Telehealth in the morning Clinical team flies out of MI
Doctors and nurses stay on the island from Monday to Thursday night, and leave Friday.		
A clinic every fortnight with visiting nurses and local Aboriginal health workers who specialise in Mental health, early childhood and family, and diabetes & chronic disease		

Same Doctors and Nurses (male and female) at the Ngarnal clinic

Supported by our local community staff



Have your say: tell us what you think is important to include in our service

 Ngarnal Health Service
ABORIGINAL COMMUNITY CONTROLLED



Royal Flying Doctor Service

NGARNAL CLINIC SUPPORTED BY THE LOCAL TEAM INCLUDES:

- Aboriginal Health Workers
- Community transport to/from clinic appointments
- Social & Emotional Wellbeing workers
- Community support programs
- Allied Health workers (podiatry, dietitian, pharmacy, occupational therapist)

All visiting clinicians stay on the island and work closely with local Aboriginal Health Workers and community staff to provide culturally safe continuity of care.

Patient records will be securely and confidentially managed by RFDS, and with permission, existing Gidgee client records will be safely transferred to the Ngarnal Clinic.

Your care remains grounded in community, culture and connection.

FOLLOW US ON SOCIAL MEDIA TO KEEP UP TO DATE ON WHAT SERVICES ARE IN CLINIC  

Lardil Street, Gununa, Mornington Island, QLD 4892
referrals@nacchs.com.au | 0457 297 821 | nacchs.com.au

Chief Executive Officer					
Classification	Executive	Employment	Full time	Reporting to	Board
Salary	\$220,000 - \$250,000 + superannuation	Benefits	Attractive health promotion charity salary packaging	Staff	Yes
Location	Cairns	Contact	Kristina Knowles	Closing date	5 th June 2026

The Board is seeking a highly capable executive with a demonstrated record of leading complex organisations through growth, reform and change. You will be strategic in outlook, disciplined in execution and confident operating in a diverse stakeholder environment.

Selection Criteria

- Demonstrated executive leadership experience in a complex service environment
- Proven success leading organisational change, growth, or service transformation
- Strong governance, risk, compliance, and Board engagement capability
- Sound operational and financial management expertise
- Highly developed stakeholder engagement and partnership-building skills
- Experience working with Aboriginal and Torres Strait Islander communities, together with a strong commitment to culturally safe leadership

Experience in health, community services, social impact or community-controlled sectors will be highly regarded.