

POSITION TITLE:	OSHC Assistant Educators
FTE:	Casual
CLASSIFICATION:	Band 1 Level 3.1 to Level 4.3
DIVISION:	Early Childhood Education and Care
PROGRAM:	Out of School Hours Care
LOCATION:	Cardinia Shire
TENURE:	Casual
DATE:	June 2021

1. ABOUT WINDERMERE

Windermere is an independent community service organisation, working across south east Victoria to help those who need it most. Since our beginning more than 150 years ago, we have been working to create a stronger, more connected and supported community. Our support comes in many forms as we work together to find the right solutions for the many and varied complex issues faced by children, families and individuals in our community.

Our aim is to get in early by providing programs and services within five primary areas:

- Family Wellbeing to create positive behavioural changes, greater understanding and respond to violence and/or neglect
- Childhood Development, Education & Support including child care and services for children and adults with developmental delays and disability
- Assistance and support for victims of trauma, assault and/or violent crime
- Community Strengthening designed to respond quickly to critical and emerging needs.
- Homelessness services to support individuals and families to secure and maintain accommodation and to build capacity to reduce the cycle of homelessness

We believe that everyone is someone in our community and that is reflected in our approach with those we work with every day. Whilst we receive funding for some services from state and federal governments, others are funded solely by donors and sponsors to whom we are truly grateful.

2. OUR PURPOSE, VISION AND VALUES

Our Purpose:

We get in early to make a difference in the lives of individuals, families and communities

Our Vision:

A stronger, connected and supported community

Our Promise:

Our many services working together with you for a better life

3. KEY RESULT AREAS, RESPONSIBILITIES AND PERFORMANCE MEASURES

Key Result Areas	Responsibilities	Performance Measures
Program and Practice	<p>Assist in the provision of a high quality programs for all children by following the National Quality Standard, Early Years Learning Framework and Framework for School Age Care – My Time, Our Place</p> <p>Assist in meeting all regulatory and legislative requirements</p> <p>Assist in program planning that is based on the Framework for School Age Care – My Time Our Place</p> <p>Ensure that confidentiality is maintained and privacy of children, parents, students and educators is respected at all times</p> <p>Participate and contribute to the ongoing evaluation and quality improvement of the program</p> <p>Contribute to and participate in audits , inclusive of Assessment and Rating process</p>	<p>As per individual work plan</p> <p>Learning activities and experiences are purposeful, supports ongoing learning and planned for / available everyday</p>
Educational Environments	<p>Provide and support an inclusive environment including for children with additional needs and for families</p> <p>The environments are prepared and maintained in such a way that engages children and families and promotes learning</p> <p>Sustainable practices are implemented and maintained within the curriculum</p>	<p>As per individual work plan</p> <p>Positive child and family feedback</p> <p>Positive assessments, ratings, spot check reports</p> <p>Positive internal audit reports and reviews</p>
Relationship with Children	<p>Perform tasks including, but not limited to supervision of children, running of activities, cleaning and food preparation</p> <p>Foster a rich play environment consistent with the Framework for School Age Care – My Time Our Place</p> <p>Create a warm, caring environment for all children attending the service</p> <p>Foster a collaborative, caring environment and a sense of community for the children</p> <p>Interactions with children are respectful, responsive, meaningful, open and support their ongoing learning and development</p>	<p>As per individual work plan</p> <p>Positive child and family feedback</p> <p>Positive coworker feedback</p> <p>Children’s participation, opinions and contributions are clearly documented and used to inform programming</p> <p>Positive assessments, ratings, spot check reports</p> <p>Positive internal audit reports and reviews</p>

	<p>Support children to make decisions and choices regarding their learning and development</p> <p>All children are supported to understand their behaviors and emotions through respectful interactions</p> <p>Positive behavior guidance methods utilised when working with children</p>	
Relationship with Families	<p>Provide a welcoming and professional environment for families through the provision of consistently high quality customer service</p> <p>Cooperate and work collaboratively with families, ensuring regular communication regarding the care and specific needs of their children, and ensuring that families feel comfortable and encouraged to become involved in the service</p>	<p>As per individual work plan</p> <p>Positive family feedback</p> <p>Family participation, opinions and contributions are clearly documented and used to inform programming</p> <p>Positive assessments, ratings, spot check reports</p> <p>Positive internal audit reports and reviews</p>
Health & Safety	<p>Each child's health, safety and wellbeing is promoted and supported</p> <p>The safety of children is promoted and advocated for at all times</p> <p>Children's comfort is considered in the environment, including resting areas, flexible routines and nourishment</p> <p>Share responsibility for maintaining a safe and hygienic environment for children by practicing safe food handling and cleaning and sanitizing routines</p>	<p>As per individual work plan</p> <p>Illnesses are reported and managed according to procedures</p> <p>Child safety concerns are documented and reported when required</p> <p>Positive assessments, ratings, spot check reports</p> <p>Positive internal audit reports and reviews</p>
Organisational expectations and directives in relation to policies and procedures and the organisation's purpose, vision and values	<p>Familiarise yourself with and adhere to Windermere's Policies and Procedures, including the Code of Conduct, Human Resources policies and guidelines and Occupational Health and Safety obligations</p> <p>Demonstrate dedication and commitment to work in accordance with Windermere's values and behaviours</p> <p>Attend prearranged dates scheduled for supervision and organisation wide training, including organisation forums and on line induction and be actively involved in the 6-week induction review, 3 and 6-month probationary reviews and a recurring annual performance review with the relevant supervisor</p> <p>Contribute to or participate in Continuous Quality Improvement (CQI) activities of the</p>	<p>Ensure policies, procedures and codes are complied with at all times</p> <p>Ensure all interactions are undertaken in accordance with the behaviours set, as outlined in the Code of Conduct</p> <p>100% attendance at performance reviews.</p> <p>Completion of induction and orientation within set timeframes.</p> <p>Positively embrace and adopt change as it occurs.</p> <p>Ensure arrangements are made so that 100% of courses are attended or completed.</p> <p>Report risk to the appropriate Windermere personnel and utilise</p>

	<p>organisation, and will implement CQI strategies into their work practices</p> <p>Meet the challenges of change as it occurs within the service and organisation</p> <p>Attend or complete foundation and position specific training courses set by the organisation and attend or complete discretionary training as approved by the supervisor</p> <p>Actively assess, manage and where possible mitigate workplace risk including (OH+S), consumer related risk, reputation risk and personal risk.</p>	<p>current risk management tools and procedures available.</p> <p>Protect the rights, safety and wellbeing of children and provide a child safe environment</p>
--	--	---

The employee will be expected to perform other duties outside those set in the position description as directed from time to time which are within the employee’s skill, qualification, experience and competence level to meet the organisation’s operational needs.

The Position Description may be amended from time to time at the organisation’s discretion. Where there is inconsistency between KPI’s in this Position Description and those within the Organisation Objectives, the Organisation Objectives will stand.

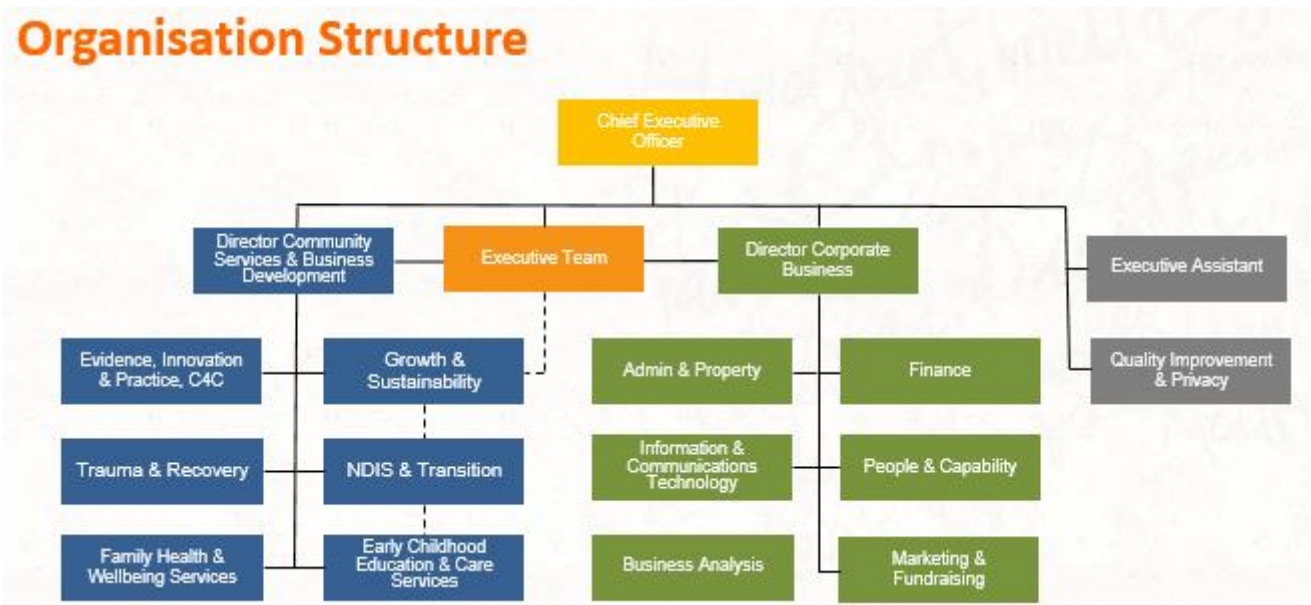
4. ORGANISATIONAL RELATIONSHIPS

LINE MANAGER: Manager – Early Childhood Education and Care

SUPERVISES: Nil

INTERNAL RELATIONSHIPS: Windermere colleagues across all program in the organisation, Families, OSHC team

EXTERNAL RELATIONSHIPS: DET, ACECQA and inclusion support services



5. KEY SELECTION CRITERIA

- ACECQA approved qualification for Educators working with over preschool children- please see ACECQA website as this list includes qualifications such as teaching, Social Science , Physical Education, Youth Studies and more
- Current Victorian Working with Children’s Check
- Level 2 First Aid , including CPR and anaphylaxis and asthma management training
- Understanding of the needs and development of children aged 4 to 12 years
- Previous experience and/or Food Safety Handling certificate would be an advantage
- Demonstrated experience in working within the National Quality Framework
- Demonstrated ability and understanding of developing positive relationships with children and families
- Good planning and evaluation skills
- Willingness to work effectively as part of a team
- Current Victorian Drivers’ License
- Willingness to undertake relevant pre-employment screening and checks

6. APPLICATION DETAILS

To maximise your opportunity for employment, it is recommended that you provide the following information:

- Covering application letter briefly addressing the key selection criteria
- Current Resume that includes a minimum of 2-3 referees

Windermere conducts thorough and detailed pre-employment safety screening checks for short listed candidates and requires evidence of relevant qualifications.

The personal information that you have provided in your job application and resume will be used for the purposes of assessing your application and will be treated in accordance with our Privacy Policy or by request to us. If you are unsuccessful in securing a position with Windermere we will hold your application for 3 months, after which time it will be securely destroyed. For further information about Windermere, including our Privacy Policy, please visit www.windermere.org.au

Under Victorian WorkCover legislation, it is the duty of the successful applicant to advise Windermere of any pre-existing condition which could be aggravated by the type of employment they are applying for. Failure to do so will seriously jeopardize any entitlement the successful candidate might have for a work related aggravation of the non-disclosed and pre-existing condition.

Alternatively, you can send your application via the Windermere website: <https://www.windermere.org.au/careers/how-to-apply/>

I have read this document and agree to undertake the duties and responsibilities listed above.

I acknowledge that:

- The PD is an indication of the duties and responsibilities that I may be required to undertake. Additional or other duties and responsibilities may be allocated to me. Where additional training and support is required to fulfil extra or other duties of a similar level of responsibility, it will be provided within the guidelines of Windermere’s Training and Development policy.
- The PD will be reviewed regularly in consultation with me.
- The Key Performance Indicators (KPIs), where included in this document, are indicative. KPIs will be set by the immediate supervisor in discussion with me, for each year (or another set period) and my performance reviewed against those KPIs.

Occupant:

Name: _____

Signature: _____ Date: _____