

Position Description

Position details

Position Title:	Child Youth Adult and Family Counsellor Advocate	Reports to:	CYAF Team Leader in regional team
Team:	Direct Services	Location:	Dallas
Classification:	Level 6	Status:	12 months fixed term/Ongoing

The Organisation

The Victorian Foundation for Survivors of Torture Inc. (VFST), also known as Foundation House, provides services to advance the health, wellbeing and human rights of people from refugee backgrounds who have experienced torture or other traumatic events.

Established in Melbourne in 1987, Foundation House is non-denominational, politically neutral and non-aligned. It is constituted as a not-for-profit organisation managed by an elected Board of Management and is funded by the Commonwealth and Victorian Governments, philanthropic organisations and donations from private individuals.

Foundation House is a state-wide agency offering services in metropolitan, regional and rural areas. Offices are in Brunswick (head office), Dallas, Dandenong, Ringwood and Sunshine. Services are also provided in partnership with other agencies outside of the metro area. With approximately 200 staff the organisation:

- Provides services to clients in the form of counselling, advocacy, family support, group work and complementary therapies
- Works with client communities and the sectors they interact with
- Offers professional and organisational development
- Advocates to governments for improvements to policies and programs
- Conducts and contributes to research

Working with approximately 5,000 clients a year a trauma recovery informed service model guides the integrated organisational structure which is comprised of the following areas:

- Direct (Client) Services
- Practice Development & Learning
- Community and Sector Development
- Corporate Services

Foundation House is committed to promoting and protecting the interests and safety of children and this is reflected in our organisational policies, protocols and staff development

Mission

To advance the health, wellbeing and human rights of people from refugee backgrounds who have experienced torture or other traumatic events.

Organisational Area Summary

Direct Services provides services to survivors of torture and other traumatic events in the form of counselling, advocacy, family support, group work, psycho-education, information sessions and complementary therapies. Direct Services comprises three regions (Western, Northern and South East),

Position Description

the Intake and Access Team, Complementary Therapies Team, Ucan2 and Rural and Regional Services. There is also Mental Health Clinic activity in each region and the General Manager Direct Services (GMDS) has overall responsibility for the provision of this service. The regional management units are responsible for the delivery of counselling and advocacy services to clients in their geographic regions. Services are delivered through onsite and outreach counselling and advocacy. As an organisation we also undertake comprehensive systemic work with organisations and agencies that provide assistance to survivors. Direct Services teams are currently located in metropolitan Melbourne with offices in Brunswick, Sunshine, Dallas, Dandenong and Ringwood.

Position Summary

The key role of the Counsellor Advocate is to deliver effective and appropriate assessment, counselling and advocacy services to clients of VFST who are survivors of torture or other traumatic events. Working within the context of the Foundation House Integrated Trauma Recovery Model, the Counsellor Advocate will provide a wide range of interventions designed to address the psychological effects and social consequences arising from a client's past experiences of human rights violations.

This role will work predominantly within the Child, Youth, Adult and Family Programs which delivers services to children and their families with early intervention and a family based approaches. Clients may have permanent residency or are asylum seekers who could be referred from detention centres, community detention, or living in the community.

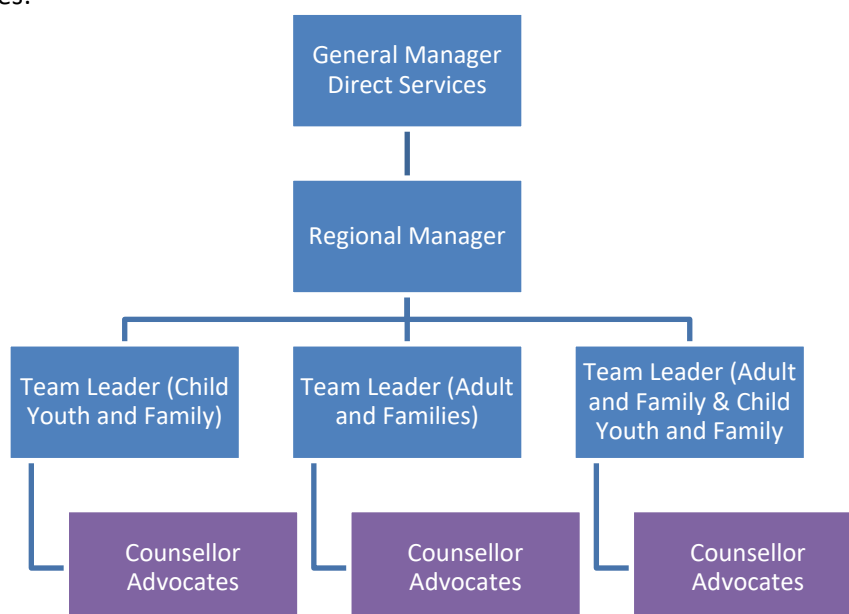
To maximise access, outreach work is often indicated and interventions can be conducted in homes, schools and community settings. A key component of the child and youth focussed role is school-based work.

Scope & Dimensions:

Budgets: Nil

Number of staff: Nil

Reporting lines:



Key Responsibilities

Key Responsibility
<p><u>Assessments</u></p> <p>Conduct comprehensive psycho-social assessments with children, adolescents and families to formulate case plans within the Integrated trauma Recovery Service Model.</p> <ul style="list-style-type: none"> • Intake assessments of individuals and families to ensure client eligibility and provide a basis for prioritisation for service provision. • Risk assessments to ensure priority and immediate interventions are taken. • Establish expectations of service provision and set goals with client. • Review, revise and evaluate case plans against goals established with client.
<p><u>Counselling</u></p> <p>Provide high quality short, medium and long term counselling interventions with children, adolescents and families utilising a range of therapeutic approaches to deliver agreed client and program outcomes.</p> <ul style="list-style-type: none"> • Provide psycho-education in individual and group settings. • Use family based and early intervention approach where indicated. • Use culturally appropriate approaches to maximise outcomes for clients. • Provide counselling and case management according to client needs.
<p><u>Advocacy</u></p> <p>Undertake advocacy and liaison on behalf of clients with a range of relevant health, community, education and legal services to enable access to and use of those services.</p> <ul style="list-style-type: none"> • Provide secondary consultation to external service providers as needed and/or as required by the program. • Facilitate referrals to relevant agencies. • Contribute to identifying systemic issues affecting the delivery of the Child, Youth, Adult and Family services and contribute to informing relevant policy.
<p><u>School-based Outreach</u></p> <ul style="list-style-type: none"> • Provide counselling and advocacy interventions for children and young people across a number of school sites. • Establish and maintain good working relationships with relevant school staff. • Offer secondary consultation and learning opportunities for school staff in collaboration with the VFST School Support Team.
<p><u>Client Information & Reporting</u></p> <p>Document and record all client information required to maintain a comprehensive client record in the client management system - Penelope.</p> <ul style="list-style-type: none"> • All client based and non-client based activity must be accurately entered as required in a timely way. • Maintain timely and accurate client records, meeting all requirements of Direct Services and applicable policy. • Prepare documentation and reports for relevant parties as required by the Regional Manager. • Book relevant resources (e.g. rooms, cars, interpreters) to facilitate the provision of services in an effective and efficient manner.

Position Description

Organisational Obligations

- Attend and participate in all agency activities which meet VFST's organisational and professional development requirements. These include staff, team and agency meetings, professional development sessions, supervision and debriefing.
- Undertake a range of project or other duties required to support the effective delivery of direct services to clients.

Health & Safety

Actively contribute to health and safety at Foundation House by being aware of safety policies and procedures and consciously applying these every day to ensure the health and safety of our workplace.

Personal Qualities

- Genuine interest in working with vulnerable clients in promoting well-being
- Ability to work autonomously and as a member of a multidisciplinary team
- Ability to manage competing priorities
- Commitment to ethical practice, human rights and social justice
- Flexible and adaptable approach to meeting goals.

Selection Criteria

Qualifications:

Relevant tertiary qualifications in social work, psychology or a related discipline

Skills

- Ability to undertake intake assessments, comprehensive psychosocial assessments and risk assessments with children, young people and families.
- Counselling skills for complex trauma in working with children, young people and families.
- Cross cultural competencies including working with interpreters.
- Experience with advocating on behalf of children, young people and families with respect to a range of issues related to health, welfare, legal and government.
- Preparation of reports for medical and allied health professionals, other services and government bodies, and protection visa applications where required.
- Ability to work collaboratively in partnerships and with service providers.
- Ability to work independently in a school-based outreach setting and provide services at various school sites.
- Highly developed interpersonal and communication skills.
- Previous work experience as part of a multi-disciplinary team.
- Previous engagement with human rights and social justice.
- Computer literacy skills in direct data entry for client information, word processing and internet use.

Position Description

Knowledge

- Expert knowledge in trauma and its psychosocial impact on children, young people, families and communities.
- In depth understanding of child development and relevant theories for working with children, young people and their families.
- Demonstrated knowledge of a range of suitable interventions, using a trauma informed and systems based framework.
- Understanding of health and other service systems and how they operate in Victoria.
- Understanding of communities and their role in promoting recovery.

Conditions of employment

- VFST promotes the safety and well-being of children
- A satisfactory police check, WWC will be required of the successful applicant.
- The position is in accordance with the Victorian Foundation for the Survivors of Torture Enterprise Agreement.
- This position will require travel between sites, attending schools and home visits and therefore the successful applicant must hold a current drivers licence.
- The right to live and work in Australia.

Approval and Acknowledgement

Date PD last reviewed:	July 2020
PD Approved by:	Regional Managers
Date of approval:	July 2020