

Catchment and Water Resources Modeller

Position description

alluvium

Alluvium Consulting

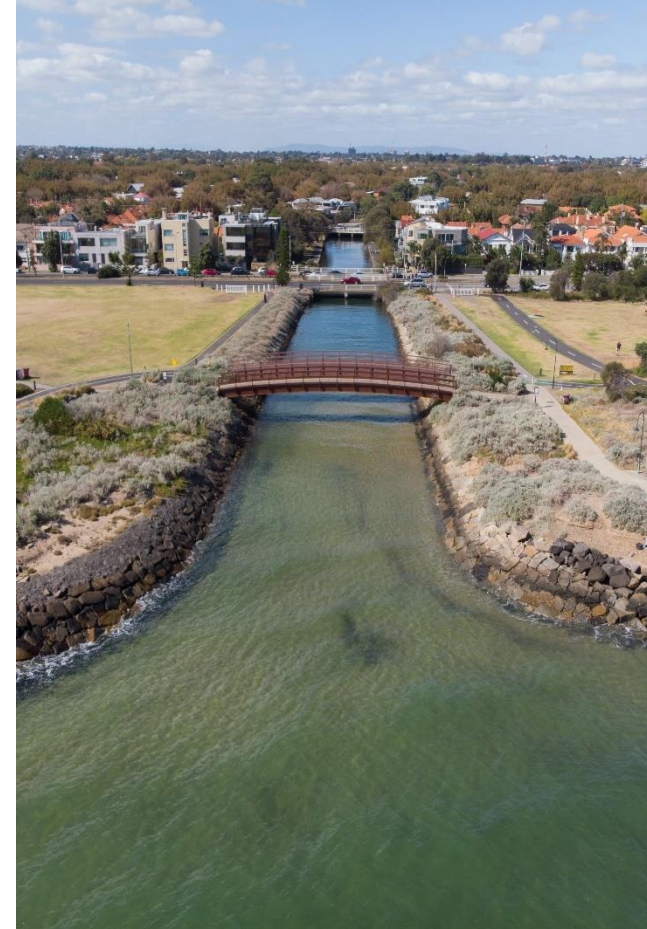
We believe the application of creative thinking, robust science and practical engineering can effectively address the complex and interrelated threats to our natural environment. Our work makes a difference to the world we live in.

Alluvium is an employee-owned consulting firm founded in 2006 to provide advice to government and private organisations on issues facing our water resources, rivers and catchments. We are not a hierarchical business, everyone at Alluvium takes responsibility for high quality advice and great client communication. We will not compromise these parts of our service.

Our focus is catchments to coasts. We aim to influence the direction of catchment management in Australia through our work with federal, state and regional government and private sector clients in the resources and development sectors.

We work hard to differentiate our business and believe it is possible for a commercial organisation to measure its success by things other than profit alone. Our motivation is to create a business that can and will make a difference to the world we live in. We invest heavily in an enabling culture in order to remove barriers to creativity and encourage people to develop as leaders throughout our business.

Our culture, clients and technical focus allows us to attract and retain the best staff in the industry.



alluvium

The Alluvium Group

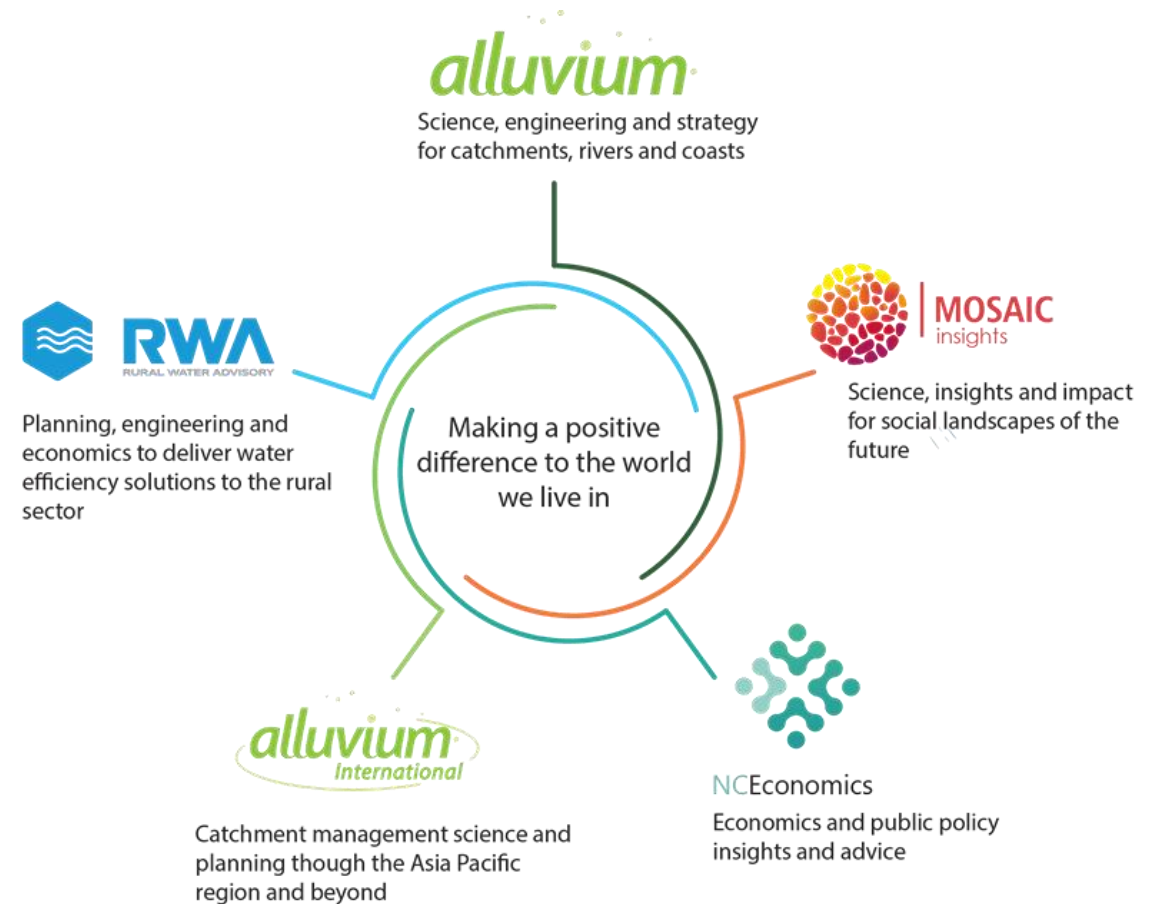
Alluvium Consulting is part of the wider groups of companies in the Alluvium Group.

The Alluvium Group brings together five organisations who share a common purpose: to make a difference to the world we live in.

We are scientists, planners, engineers, strategists, analysts and economists. We combine these skills to address the complex, systemic, and intractable issues that face our society, environment and economy. By solving these problems, we transform the way we live and the health and productivity of our catchments, rivers, coasts and cities.

The five industry-leading businesses that form the Alluvium Group are driven by our collective vision and a shared commitment to the highest quality of client service and technical excellence. Our business model is unique and driven by a genuine belief that it serves our clients better.

The strength of our group is embedded in the independent business decision making of our company boards and leadership, and the ability of each entity to focus on delivering exceptional work for our clients.



alluvium

The role context

The role would ideally be based in our Sydney or Newcastle offices, with the option to be based in Brisbane, Melbourne or Canberra. Depending on the level of experience, the successful candidate would be responsible for leading, or supporting, catchment and water resources management projects across Alluvium.

The successful candidate will be responsible for:

- Leading/supporting the catchment and water resources management business across Alluvium
- Delivery of quality and competitive consulting services in the area of water resources management, river operations and catchment management including high quality reporting
- Excellent ability to analyse, interpret and communicate information and modelling results
- Preparation of proposals and delivery of projects
- Managing projects, including technical delivery as well as allocation of staff, time, budgets and client communication
- Integration with other parts of the business including catchment modelling and planning, coastal management, environmental flow management, economics
- Providing support to assist the development of less experienced staff through guidance and assistance with project work
- Identifying and harnessing business development opportunities



The Role

We are looking for an exceptional person who is passionate about Alluvium and what it is trying to achieve

Skills and experience:

Essential

- A degree or higher in hydrology, water science, or similar
- Knowledge and proficiency in catchment and water resources modelling platforms including eWater source and IQQM/REALM
- Knowledge and experience of Australian water resource systems, operation, licencing rules and stakeholders
- Strong understanding of catchment processes
- Demonstrated success in applying these skills and experience to real world problems
- A high level of written and verbal communication skills

Desirable

- Experience undertaking regional spatial analysis and/or remote sensing
- Demonstrated ability in building a consulting business
- Leading, mentoring and supervising teams

Key attributes:

- An appreciation of how modelling can be used to inform on-ground management and decision support
- A willingness and positive contribution to teamwork
- Ability and desire to work across disciplines and geographies
- A willingness to contribute to a collaborative and values-driven work culture
- Ability to develop good rapport with clients, staff and partners
- Ability to build relationships and profile in both government and private industry



Next steps

An important part of our business is the ownership structure. Alluvium is a staff owned business. We are committed to continued broadening of the ownership to staff who support and are actively engaged in the attainment of our strategic goals. It is a preferred option for all senior staff to have ownership in the business over time

Remuneration is commensurate with skills and experience and subject to negotiation

We have generous policies surrounding leave and other employee benefits

Please contact Lisa Walpole to further discuss this role
lisa.walpole@alluvium.com.au (0414 096 545)

Applications consisting of a short cover letter and CV can be sent to info@alluvium.com.au

Please email your application by 4pm, 5 June 2019.





We are passionate about the protection and restoration of coasts and their catchments. We strive to make a difference to the world we live in.

alluvium